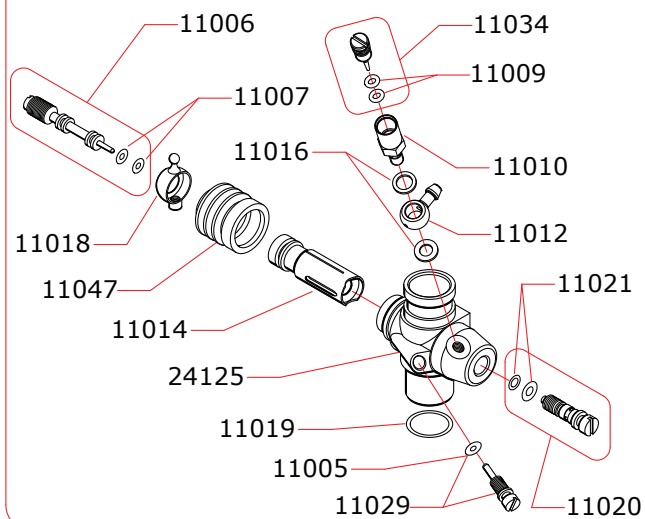


## CARBURETTOR CODE: 24025

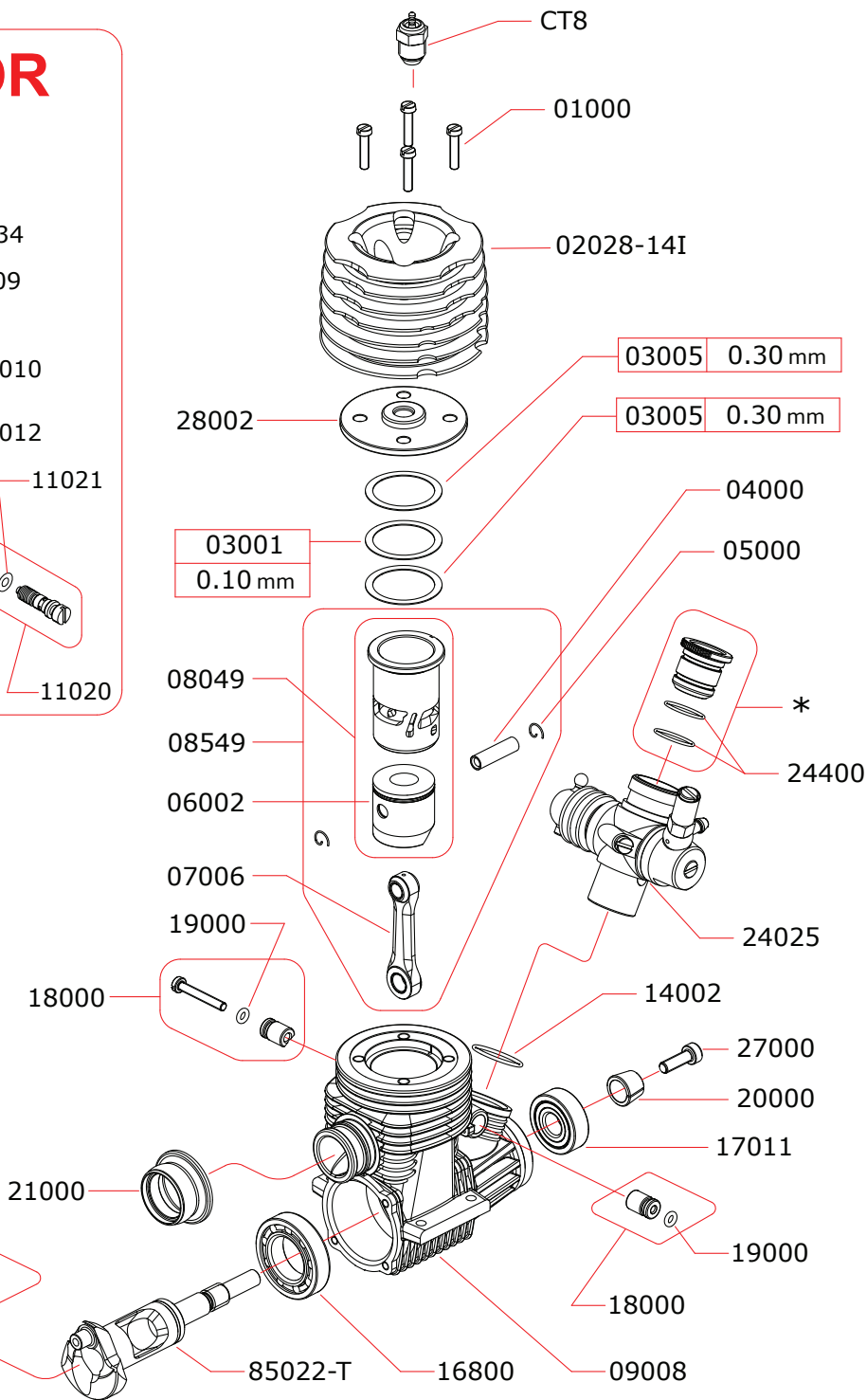
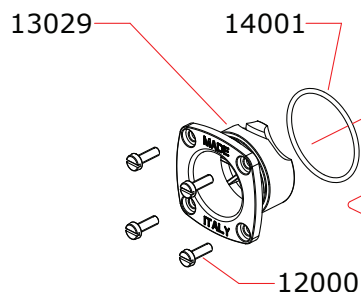


\*

|  |       |        |
|--|-------|--------|
|  | 24480 | 8.0 mm |
|  | 24485 | 8.5 mm |
|  | 24490 | 9.0 mm |

Optional

|  |       |         |
|--|-------|---------|
|  | 03002 | 0.15 mm |
|  | 03003 | 0.20 mm |
|  | 03004 | 0.25 mm |



Data l'ultima modifica: **17-10-2017**  
Date of last modification:

### Pipes Recommended

|  |                      |                       |
|--|----------------------|-----------------------|
|  | 51009<br>(EFRA 2006) | With ring, 3 chambers |
|  | 51010<br>(EFRA 2015) | With ring, 3 chambers |
|  | 51011<br>(EFRA 2052) | With ring, 3 chambers |

### Manifolds Recommended

|  |       |                         |
|--|-------|-------------------------|
|  | 41015 | Conical short, 2 rings  |
|  | 41016 | Conical medium, 2 rings |
|  | 41017 | Conical long, 2 rings   |