



# EXPLODED VIEW

**MITO 7 OFF**  
**MITO 7 OFF-A**  
**MITO 7 OFF-H**

**NOVAROSSI WORLD S.r.l.**

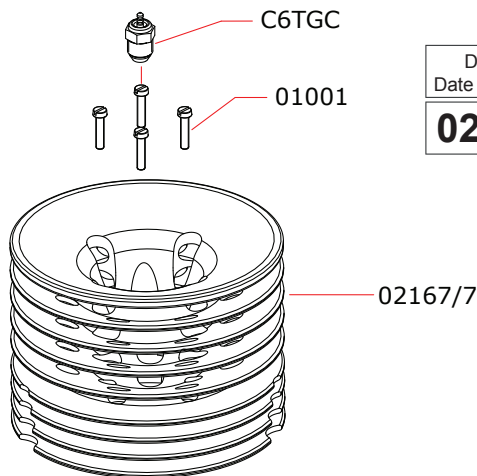
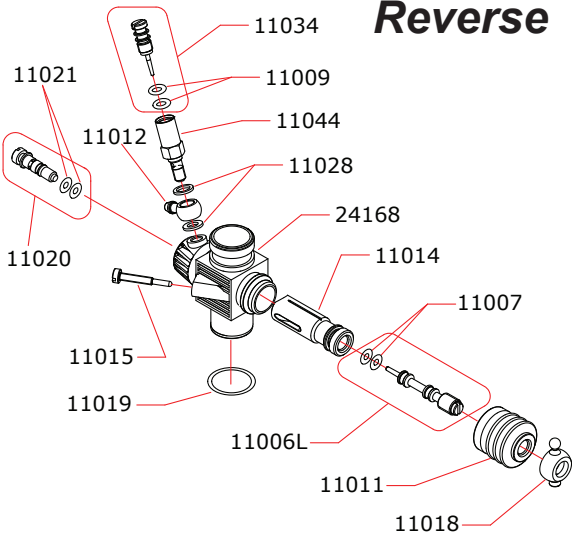
Via Europa, 20/A - 25040 Monticelli Brusati (BS) - ITALIA  
 web: www.novarossi.it | e-mail: info@novarossi.it  
 Tel. +39 030/6850316 | Fax: +39 030/6850314

*I disegni sono puramente indicativi / Drawings are just indicative.*

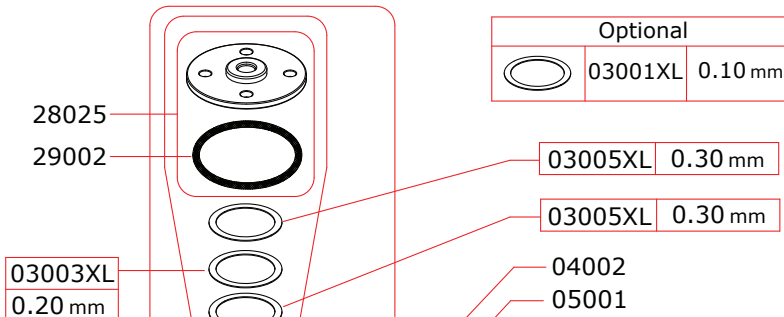
Data ultima modifica:  
 Date of last modification:

**02-09-2015**

## CARBURETTOR CODE: 24068 Reverse

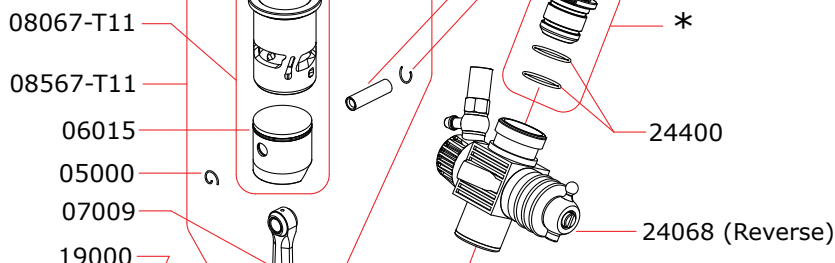


Optional		
	03001XL	0.10 mm

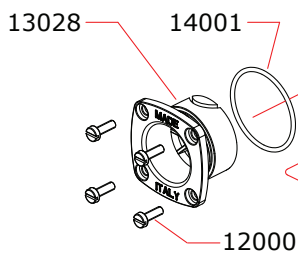


*		
	24454-A	Ø5.4mm
	24460-A	Ø6.0mm
	24465-A	Ø6.5mm
	24470-A	Ø7.0mm

	60007	SPECIAL SPRING
--	-------	----------------



16009 (steel)	MITO 7 OFF-A
16006 (ceramic)	MITO 7 OFF
16006 (ceramic)	MITO 7 OFF-H



17011 (steel)	MITO 7 OFF-A
17012 (ceramic)	MITO 7 OFF
17011 (steel)	MITO 7 OFF-H

### Pipes Recommended

	51006M (EFRA 9901)	With ring, 3 chambers reinforced tube
	51020M (EFRA 2096)	With ring, 3 chambers reinforced tube, IFMAR WC
	51016 (EFRA 9901)	With ring, 3 chambers stronger walls

### Manifolds Recommended

	41021	Short, 2 rings
	41029	Compact short, 2 rings for Mugen cars
	41030	Compact long, 2 rings for Mugen cars

La NOVAROSSI WORLD S.r.l. si riserva il diritto di apportare modifiche al prodotto senza preavviso.  
 NOVAROSSI WORLD S.r.l. reserves the right to modify products without prior notice