

# EXPLODED VIEW

## S21P5XLT/16

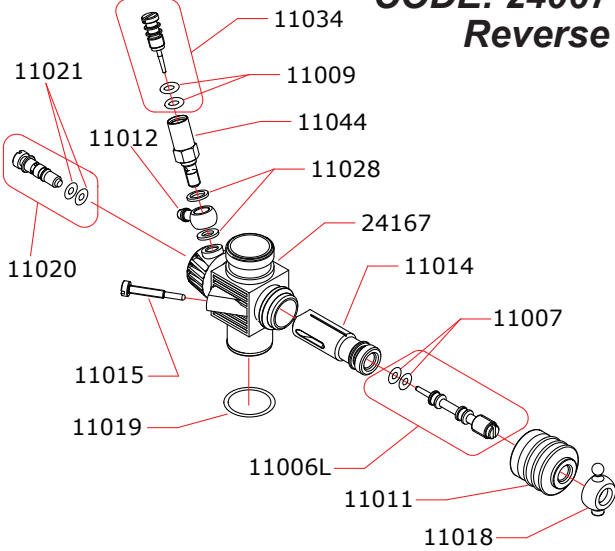
**NOVAROSSI WORLD S.r.l.**

Via Europa, 20/A - 25040 Monticelli Brusati (BS) - ITALIA  
 web: www.novarossi.it | e-mail: info@novarossi.it  
 Tel. +39 030/6850316 | Fax: +39 030/6850314

*I disegni sono puramente indicativi / Drawings are just indicative.*

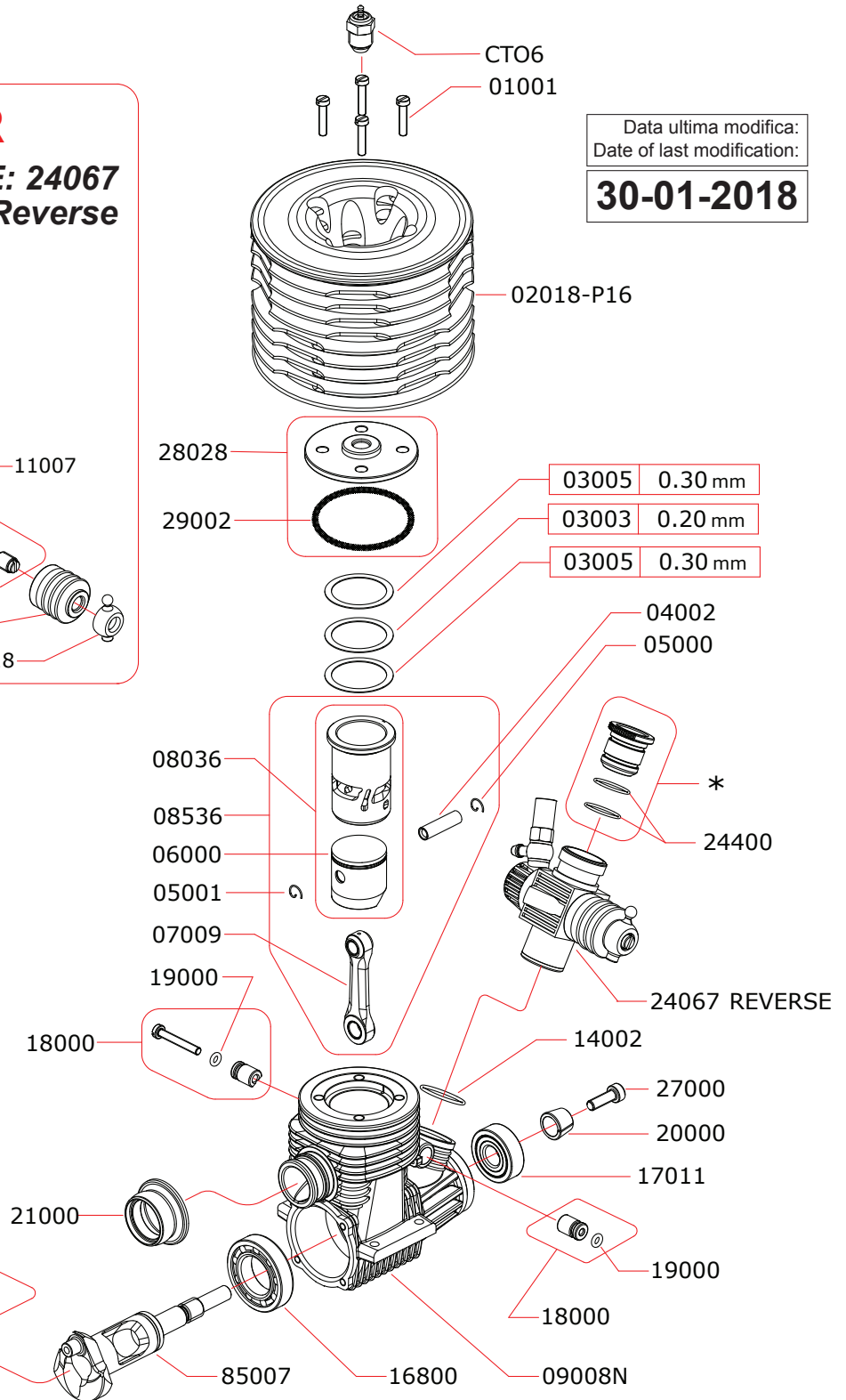
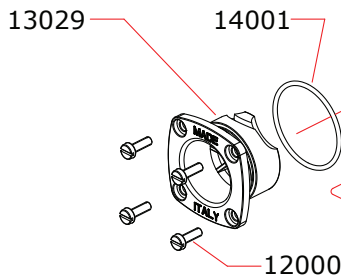
### CARBURETTOR

**CODE: 24067**  
**Reverse**



|   |       |        |
|---|-------|--------|
| * | 24454 | 5.4 mm |
|   | 24460 | 6.0 mm |
|   | 24465 | 6.5 mm |
|   | 24470 | 7.0 mm |
|   | 24480 | 8.0 mm |

|          |         |  |
|----------|---------|--|
| Optional |         |  |
| 03002    | 0.15 mm |  |
| 03001    | 0.10 mm |  |
| 03004    | 0.25 mm |  |



Data ultima modifica:  
 Date of last modification:  
**30-01-2018**

#### Pipes Recommended

|  |                      |                                      |
|--|----------------------|--------------------------------------|
|  | 51006<br>(EFRA 9901) | With ring, 3 chambers                |
|  | 51016<br>(EFRA 9901) | With ring, 3 chambers stronger walls |
|  | 51017<br>(EFRA 9853) | With ring, 2 chambers stronger walls |

#### Manifolds Recommended

|  |       |                                       |
|--|-------|---------------------------------------|
|  | 41021 | Short, 2 rings                        |
|  | 41029 | Compact short, 2 rings for Mugen cars |
|  | 41030 | Compact long, 2 rings for Mugen cars  |